

### Enterprise Grade Central Management

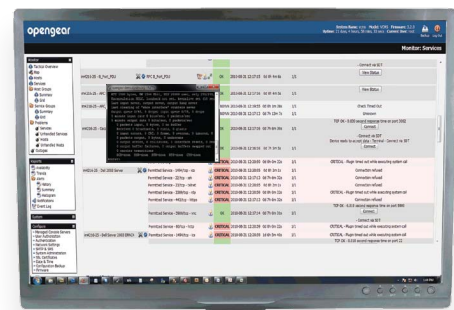
Opengear CMS6100 is a powerful system that centrally manages your network of distributed console servers and their managed devices. This enables you to actively monitor and resolve IT infrastructure problems before they affect critical business processes. Alerts are raised in the event of a disconnect or problem being identified at the remote site so the sysadmin / network manager can quickly respond. To remedy identified problems, the manager simply clicks on their browser on the CMS6100 web UI to be securely connected to the downstream console server or managed device for maintenance, reconfiguration or power cycling.

Drop in the CMS6100 appliance and point it to all the console servers. Secure SSH tunnels are automatically set up and the configuration for each console server's managed devices, users and alerts is downloaded. Or, use the Call Home feature and have remote sites restricted by firewall rules and VPN's call outbound to the CMS using a secure SSH tunnel.

Like all Opengear solutions, the CMS6100 Monitor is open and extensible. The core Nagios software is familiar to many sys admins, so it can be custom configured and extended with the thousands of Nagios add-ons.

Reduce on-site service calls and truck rolls for remote site management. Monitor, diagnose and resolve infrastructure problems from anywhere at anytime.

Simply point and click from a browser to securely connect to any device on your network

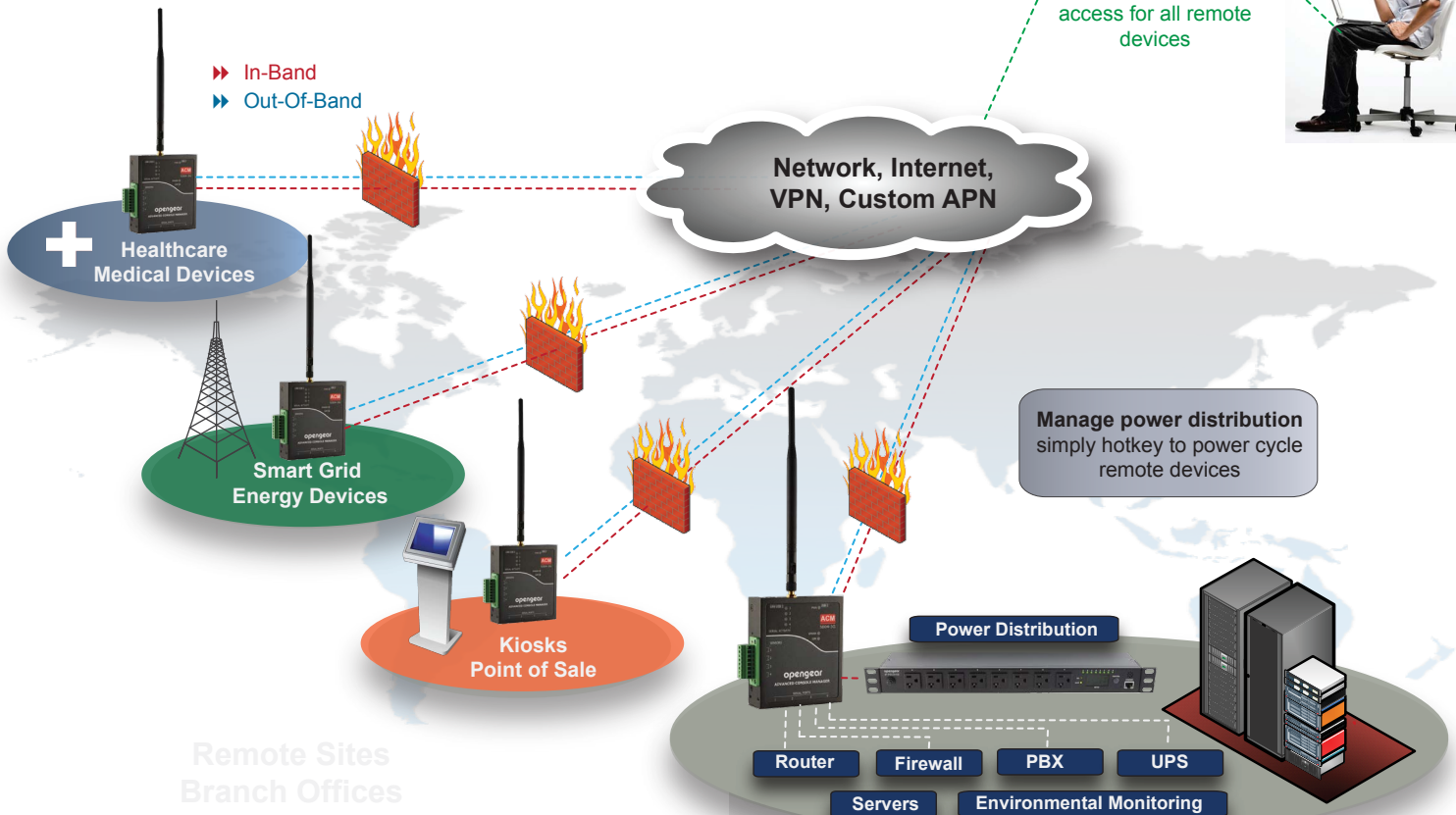


Single point of authentication and access for all remote devices



### Opengear CMS6100 Centralized Monitoring Solution

- Single pane of glass view of your distributed infrastructure
- Manage up to 255 Opengear Appliances
- Central Access and control of over 10,000 distributed devices
- Securely access and manage devices behind firewalls
- Point and click connection from anywhere anytime



## Who can most benefit from CMS6100?

### Managed service providers (MSPs)

Infrastructure management with complete monitoring, single point of authentication and access to equipment behind firewalls. Maintain customer firewall integrity and enhance service level.

### Enterprise help desks

Technical and product support teams, account control for specialists divisions. Secure access to routers, switches, PBX, UPS & PDU, firewall, and servers all using industry leading corporate security policies.

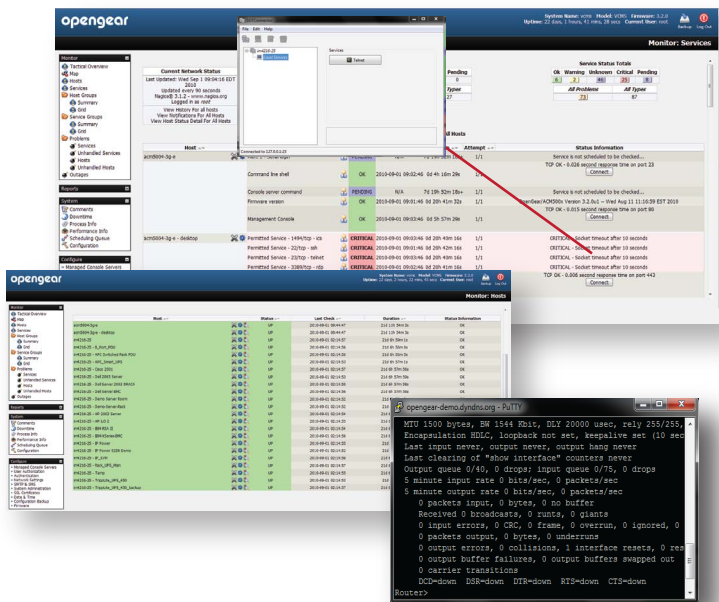
### Remote device maintenance and warranty providers

Access devices through customer firewalls in locations where inbound access is nearly impossible such as hospitals. Perform maintenance, access logs and support equipment without having a truck roll.

### Operations support providers

Centralized access to environmental monitoring, digital I/O's, serial and network hosts. High temperature end points available for harsh environments such as pipeline, grid, transportation and public utilities.

## One view of the entire enterprise



The SDT Connector java client is built into Opengear's CMS6100 Central Monitoring System provides a 'Connect' button in the Status Information field of the monitored Host. When clicked, SDT Connector establishes a secure SSH tunnel to the downstream console servers. Once the tunnel is established the SDT Connector client will forward local services through the secure tunnel to the managed device. Securely forward telnet, RDP, VNC, X, HTTP, HTTPS and much more over one secure link.

### Part Numbers

USA	AUS	UK	EU	JP
CMS6100-SAC-US	CMS6100-SAC-AU	CMS6100-SAC-UK	CMS6100-SAC-EU	CMS6100-SAC-JP

### Model: CMS6100

1 DB-9 RS-232 console / modem serial port (2400 to 115,200 bps)  
1 RJ-45 10/100 ethernet port, 4 high speed USB

### Cables Included

2 RJ-45 CAT5 cables (6 ft)  
2 RJ-45 to DB-9 adapters (straight & cross-over)

### Environmental

Ambient operating: 5°C to 50°C (41°F to 122°F)  
Storage: -30°C to +60°C (-20°F to +140°F)  
Humidity: 5% to 90%

### Regulatory

FCC Part 15 A UL 1950 CE (EN55022 A, EN55024, EN60950)  
TUV C-Tick RoHS compliant

### Power, Size & Weight

Internal universal 100-240V AC, or Internal +/- 36V to 72V DC  
Power consumption less than 10W  
17 x 6.7 x 1.75 in 44 x 17 x 4.5 cm  
1RU with rack mounts

### MTBF

100,000 Hours Operating Temperature

### CPU/Memory

AMD Geode LX800 500MH  
256MB DDR, 4GB Compact Flash, 4MB Award BIOS  
Linux 2.6 with source code access

### Compatible Console Servers

Opengear IM, IMG, CM, SD, ACM, KCS  
Manage up to 255 Opengear Appliances  
Central Access and to and control of over 10,000 distributed managed devices



### USA Head Office

630 West 9560 South Suite A  
Sandy, UT 84070  
+1 888 346 6853 (Sales)  
+1 801 606 2798 (Fax)  
sales@opengear.com

### Australian Office

Benson House Suite 44  
2 Benson Street  
Toowong QLD 4066  
+61 7 3871 1800 (Sales & Admin)  
+61 7 3720 8289 (Fax)  
sales@opengear.com.au